



# DXAdvanced®

## DXAdvanced DX1000N Removable Chassis Model

A removable chassis model has been added to the Yokogawa's latest DXAdvanced Video Graphic Recorder featuring easy maintenance.



The new DXAdvanced DX1000N features an inner chassis that can be removed from the case via the front panel of the instrument. This provides access to all of the internal components of the DX1000N from the control panel without having to access the rear of the unit or disturb any of the field and power supply wiring. Functionality, appearance, and panel cutout dimensions are the same as those of the standard DX1000.

### Advanced Performance

#### - High-speed measurement

\* High-speed measurement of up to 25 ms (DX1002N or DX1004N using fast sampling mode)

### Advanced Memory

#### - High Capacity Internal Memory and Removable Media

- \* Supports up to 200 MB of non-volatile, internal flash memory for reliable, long-term data storage
- \* All models include a CompactFlash drive. Rugged and readily available CompactFlash cards (CF cards) serve as the removable media, and are available as optional accessories.
- \* Supports USB Flash drive with optional USB interface.

### Advanced Display and User Interface Functions

#### - Easy configuration and menu navigation

- \* USB keyboard & remote control options for text entry
- \* Versatile, standard display modes
- \* Jump to your favorite screen with the Favorite key

### Advanced Connectivity

#### - Powerful Ethernet connectivity and convenience functions

- \* Standard Ethernet interface
- \* Includes Web server and E-mail messaging functions, time synchronization (SNTP), automatic network setup (DHCP), file transfer (FTP) and more.

Bulletin 04L43B01-01E

### Advanced Reliability and Security

#### - Rugged construction and data security

- \* Water and dust-proof front panel (complies with IEC529-IP65 and NEMA No.250 TYPE4\*) \*Except for external icing test.
- \* A mechanical lock with removable key is provided to securely latch the front panel door. This forbids access to the power switch and removable media.
- \* Reliable, non-volatile flash memory is used for internal data storage operations with ECC\* function. \* ECC: Error Check and Correct



www.daqstation.com

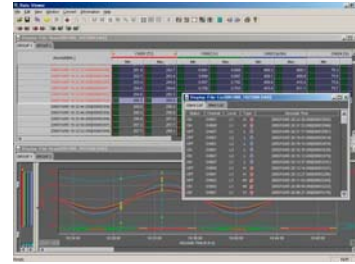
**vigilantplant.™**  
The clear path to operational excellence

**YOKOGAWA** ◆



## Application Software (DAQSTANDARD for DXAdvanced)

Every DXAdvanced unit includes a DAQSTANDARD software, which is used for all data file display and reporting functions, including printing and conversion to common file formats. In addition, it includes a configuration tool that is used to fully configure the unit in both on-line (via Ethernet communications) and off-line (saving and loading files from the media) modes. Configuration files can also be archived on the PC.



## Models and Suffix Codes

Model code	Suffix code	Option code	Description
DX1002N			2 ch, 125 ms (Fast sampling mode: 25 ms)
DX1004N			4 ch, 125 ms (Fast sampling mode: 25 ms)
DX1006N			6 ch, 1 s (Fast sampling mode: 125 ms)
DX1012N			12 ch, 1 s (Fast sampling mode: 125ms)
Internal memory	-1		Standard memory (80 MB)
	-2		Large memory (200 MB)
External media	-4		CF card (with media)
Display language		-2	English/German/French, degF, DST (summer/winter time)
Options		/A1	Alarm output 2 points *1
		/A2	Alarm output 4 points *1
		/A3	Alarm output 6 points *1 *2
		/C2	RS-232 interface *3
		/C3	RS-422A/485 interface *3
		/F1	FAIL/Status output *2
		/H2	Clamped input terminal (detachable)
		/M1	Mathematical functions
		/N1	Cu10, Cu25 RTD input/3 leg isolated RTD
		/N2	3 leg isolated RTD *4
		/N3	Extended input type (PR40-20, Pt50, etc.)
		/P1	24 VDC/AC power supply
		/R1	Remote control
		/TPS2	24VDC transmitter power supply (2 loops) *5
		/TPS4	24VDC transmitter power supply (4 loops) *6
		/KB1	Easy text entry (with input terminal) *7 *8
		/KB2	Easy text entry (without input terminal) *7
		/USB1	USB interface
		/PM1	Pulse input (including remote control and mathematical functions) *9
		/CC1	Calibration correction function

\*1 /A1, /A2 and /A3 cannot be specified together. \*2 /A3 and /F1 cannot be specified together.  
 \*3 /C2 and /C3 cannot be specified together. \*4 /N2 can be specified for only DX1006N and DX1012N.  
 \*5 In case that /TPS2 is specified, /TPS4, /A2, /A3 or /F1 cannot be specified together.  
 \*6 In case that /TPS4 is specified, /TPS2, /A1, /A2, /A3 or /F1 cannot be specified together.  
 \*7 /KB1 and /KB2 cannot be specified together. \*8 In case that /KB1 is specified, remote input terminal (438227) is included.  
 \*9 In case that /PM1 is specified, /A3, /M1, /R1, /TPS2 or /TPS4 cannot be specified. And combination of /A2/F1 cannot be specified together.

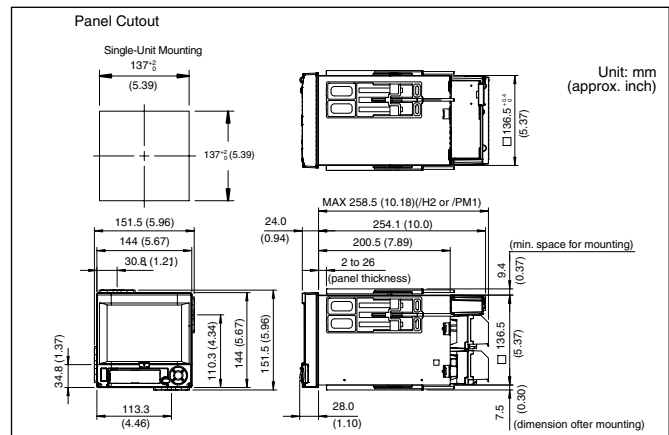
## Application Software

Model code	Description	O	S
DXA120	DAQSTANDARD for DXAdvanced		Windows 2000/XP

## Accessories

Product	Model code (part number)	Specification
Shunt resistor (for screw input terminal)	415920	250Ω±0.1%
	415921	100Ω±0.1%
	415922	10Ω±0.1%
Shunt resistor (for clamped input terminal)	438920	250Ω±0.1%
	438921	100Ω±0.1%
CF card adapter	438922	10Ω±0.1%
	772090	-
CF card	772091	128 MB
	772092	256 MB
	772093	512 MB
	772094	1 GB
Mounting bracket	B9900BX	-
Door lock key	B8706FX	-
Remote control terminal	438227	For /KB1, /KB2 option

## Dimensions



For more details on all functions, see the DX1000/DX2000 catalog (Bulletin 04L41B01-01E).  
 For more details on all specifications, see the DX1000N General Specifications (GS 04L43B01-01E).

Daqstation and DXAdvanced are registered trademarks of Yokogawa Electric Corporation.  
 Microsoft, MS and Windows are registered trademarks or trademarks of Microsoft Corporation in the United States and other countries.  
 Ethernet is a registered trademark of Xerox Corporation.  
 Other company names and product names appearing in this document are registered trademarks or trademarks of their respective holders.

### A Yokogawa Commitment to Industry

**vigilance**<sup>®</sup>



What does Yokogawa **vigilance** mean to the future of your business? **Quality**. Through products that are built from the ground up and tested to the last hour, you're ensured continuous operation and more uptime. **Innovation**. Your business will benefit from new insights and capabilities, bringing true predictability to your process. **Foresight**. As the market changes, you'll have solutions that give you the continuity and flexibility to plan ahead and grow. Our partners know the difference. With Yokogawa, you can count on a lifetime of plant efficiency, from instrumentation to operation support. Let us be vigilant about your business.

### YOKOGAWA ELECTRIC CORPORATION

Network Solutions Business Div./Phone: (81)-422-52-7179, Fax: (81)-422-52-6619

E-mail: ns@cs.jp.yokogawa.com

### YOKOGAWA CORPORATION OF AMERICA

YOKOGAWA EUROPE B.V.

YOKOGAWA ENGINEERING ASIA PTE. LTD.

Phone: 800-888-6400, Fax: (1)-770-251-6427

Phone: (31)-33-4641806, Fax: (31)-33-4641807

Phone: (65)-62419933, Fax: (65)-62412606

**NetSOL Online**

Sign up for our free e-mail newsletter  
[www.yokogawa.com/ns/](http://www.yokogawa.com/ns/)

Vig-RS-1E

Printed in Japan, 702(KP) [Ed : 03/b]

Subject to change without notice.

All Rights Reserved, Copyright © 2005, Yokogawa Electric Corporation.

**YOKOGAWA**